

purecold

INSPIRATION 2

(2CS7MA1)

Self-Contained, Medium Temperature
Slide-Out Bottom Mount
Open-Air Profile Merchandiser



Case Length	48"	72"	96"
Case Height	79"	79"	79"
Case Depth (Add 6" for Setback)	36"	36"	36"
Total Display Area (ft ²)	20.3	30.48	40.64
Refrigerated Volume (ft ³)	30.45	45.72	60.96
Maximum Shelf Depth	18"	18"	18"

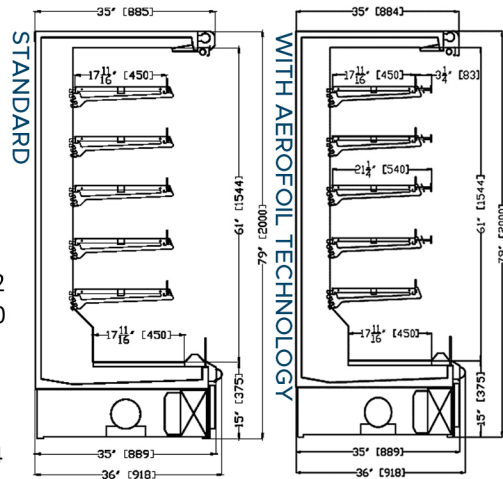
INSPIRATION2 Energy Data

**Standard*

THR in BTU/HR instantaneous	8,345	12,092	16,872
THR in BTU/HR average	7,564	11,065	15,340
Net Environmental Cooling Effect (BTU/hr)	2,642	4,572	6,175
Daily Energy Use (Kwh)	17.55	21.68	34.10

**With edge technology*

THR in BTU/HR instantaneous	6,564	9,468	12,624
THR in BTU/HR average	5,420	6,680	10,431
Net Environmental Cooling Effect (BTU/hr)	2,183	2,687	4,199
Daily Energy Use (Kwh)	12.07	14.86	23.22



INSPIRATION2 Power Information

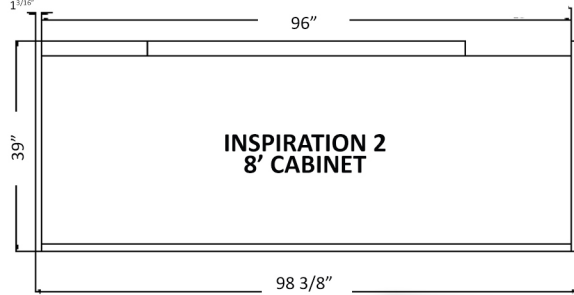
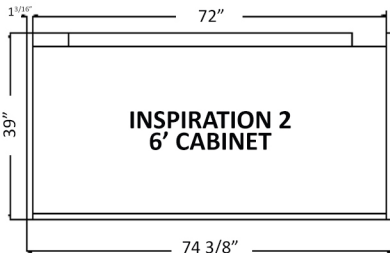
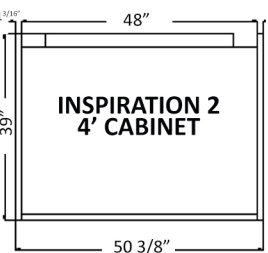
208V-1P (nec) 4 Wire (2-hots - 1 neutral - 1 ground)

Electrical Data (208V 60Hz)	Amps	Amps	Amps
Case Load	4.9	6.4	8.0
MOCP (per phase) Amps	10	10	15

Electrical Connections - Bottom Right Hand Side w/12 foot power cord

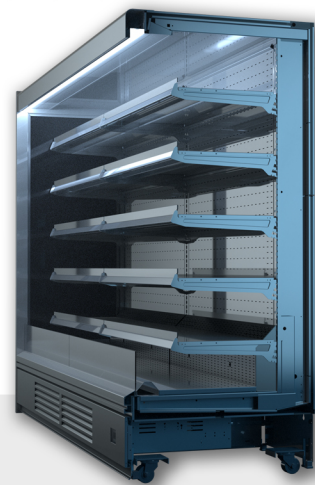


Refrigerant Charge (R448A) (lbs)	4	4.5	6.5
----------------------------------	---	-----	-----



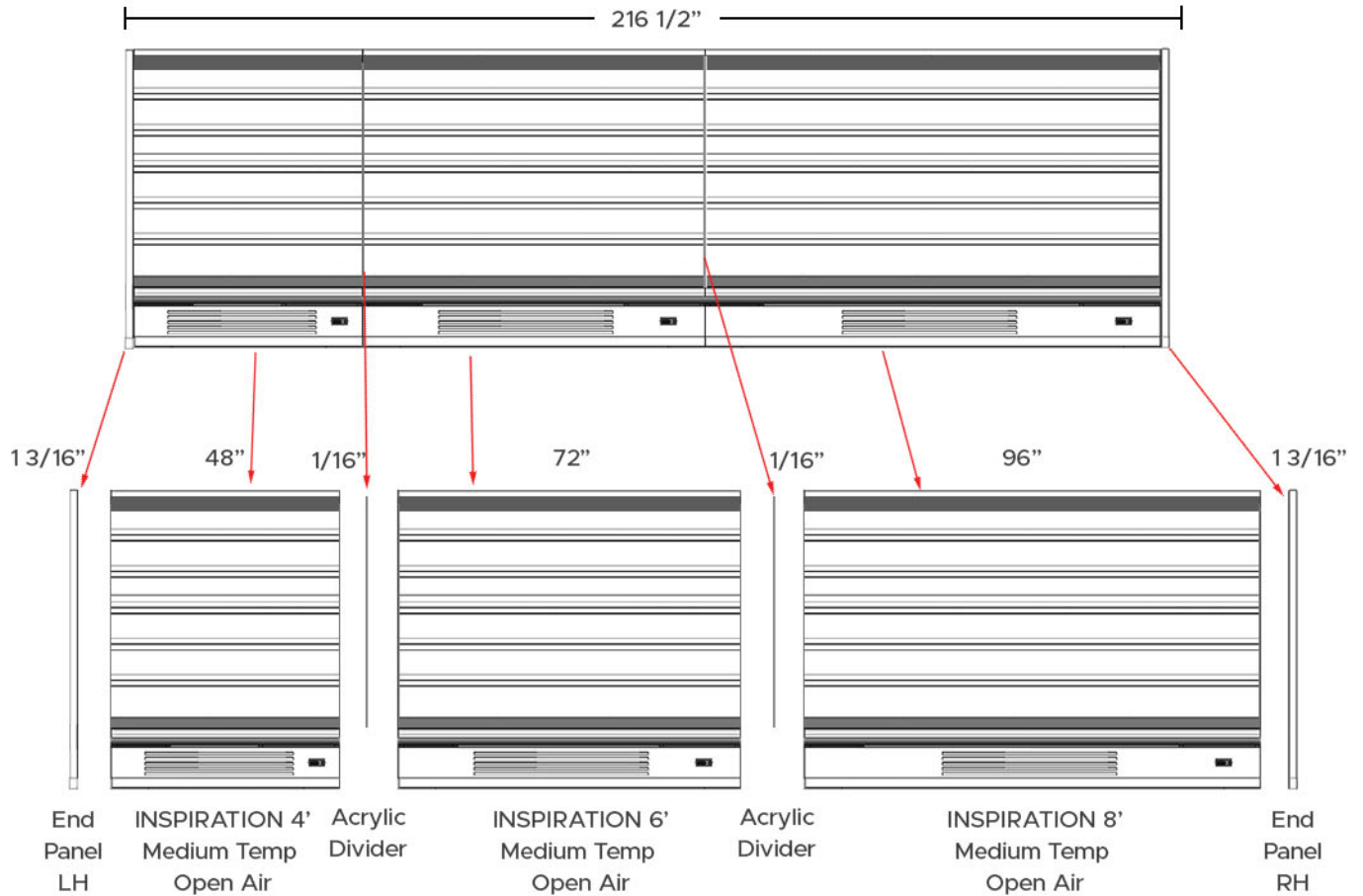
features

- No drains, no pipework. plug and play!
- Low energy and heat rejection values
- Fixtures have similar pack-out as remote application
- Recessed wheels and leveling bolts
- Self-evaporative drain pan
- Condensing unit on pull out tray
- Single electrical connection (NEMA Twist Lock)
- Medium Temperature for Dairy - Produce - Beverage
- Fits through 38" Standard Opening
- 4 foot | 6 foot | 8 foot Options
- Refrigerant: R448a
- Lighting: LED Mullion Lighting
- Shelving: 5x18"(open) 5x22"(doors)
- Ticket Rail: 1 1/4"



purecold^{INSPIRATION} Lineup Planning Guide

Lineup Breakout



Lineup Tips

- All fixtures (4-6-8 Foot Models) fully assembled are 39" total front to back.
- All lineups regardless of length require Left Hand & Right Hand End Panels
- Acrylic Dividers are required between fixtures for air separation control.